



**Superior
Energy
Efficiency**

Pre-Insulated Panelized Steel Framing

Our framing system uses rigid planks of solid expanded polystyrene (EPS) reinforced with industry standard galvanized steel studs, creating a framing package with integrated insulation like no other! We can start with any building design to manufacture your exterior walls, interior walls, and roofing panels. Our standard package delivers R-24 walls and R-32 roofs.

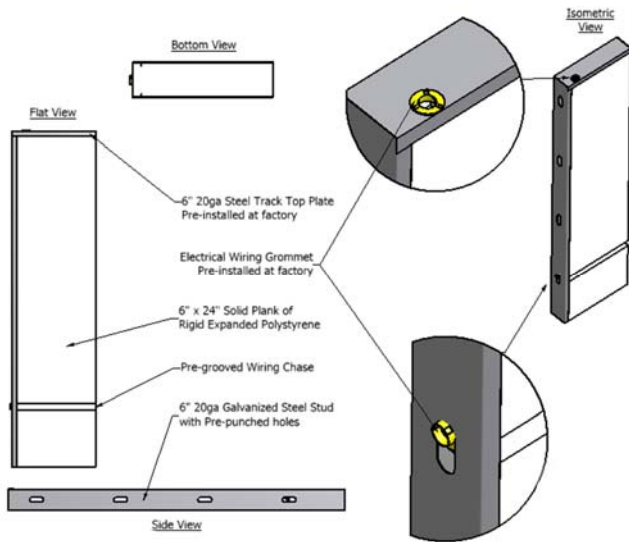
- **Benefits of Steel Framing**
- **Up to 70% energy savings**
- **Hurricane Tolerant**
- **Termite Proof**
- **Mold Resistant**

Tell your architect and builder that you want "greenhomeframing" for your new home!



www.greenhomeframing.com

System Advantages



Remarkable energy efficiency Our cutting-edge building technology provides the lowest cost per R-value available on today's market resulting in up to 70% savings on annual heating and cooling costs.

Hurricane tolerance. Panels can be engineered to exceed Miami-Dade Hurricane and international code requirements.

Lighter weight and ease of handling – The 20' x 9' wall panel using EPS/steel is approximately 300 pounds, versus roughly 800 pounds for a similar wood-frame panel.

Electrical wiring time is reduced – Our panels contain a 2" x 2" wiring chase along the interior length of each panel, eliminating the need for drilling wiring holes in each stud.

Warping and contraction eliminated – Nail pops, sheetrock cracks, and warping of wall studs and flooring joists are eliminated.

Downsized HVAC requirements – Because of the dramatically increased thermal efficiency of our panels, HVAC systems can be downsized.

Architectural flexibility – Because EPS/steel wall and roof panels transfer most of the weight to the exterior walls, interior wall placement is much more flexible.

Enhanced fire safety - EPS has a higher ignition point compared to most wood products.

Environmentally friendly – The EPS rigid insulation panels contain no CFC's or HCFC's. The steel structural provides strength without using costly lumber, thus saving trees. The energy efficient, super-insulated panels conserve fossil fuels and reduce our dependence on foreign oil.

Termite / mold resistant – Because the EPS/steel rigid panels are totally inorganic, they won't support termites, ants or other vermin, nor will they support the molds, mildews and allergens that cause "sick-house syndrome".

Lower labor costs – Fast and easy erection eliminates the need for skilled labor & framing crews.



greenhomeframing.com
KTP Mississippi, Inc.
4739 W. Oreck Rd.
Long Beach, MS. 39560

(337) 244-4727